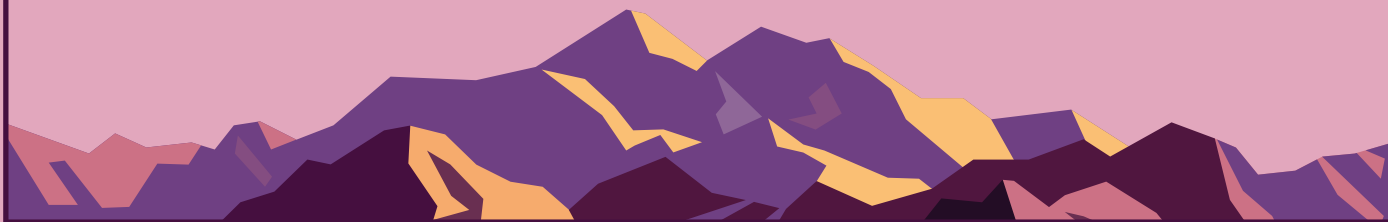




# HIMALAYAN FINE POOL SALT



## USAGE INSTRUCTIONS

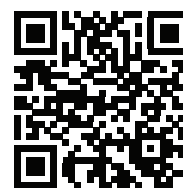
1. Turn off salt water chlorinator and pump.
2. Disconnect and remove any pool cleaners from pool.
3. Do not throw product bag into pool.
4. Carefully open bag and pour the correct amount of product into the shallow end.
5. Brush product thoroughly to dissolve.
6. Dispose of empty bag thoughtfully.
7. Run filtration system for a minimum of 12 hours.
8. Backwash filter or clean the cartridge.
9. Reinstall pool cleaner and connect, then turn on salt chlorinator and pump, and return to normal operating times.

## DOSAGE RATE GUIDE

1. For optimal results, Pool Pro recommends using Himalayan Fine Pool Salt with a complete Neptune/Pool Pro system (pump, filter and chlorinator), operating at an optimal TDS of 3,000-3,500ppm. This product can be used with other branded systems, please check the TDS requirements of your individual system.
2. Ensure your pool water chemistry is balanced before and after adding Himalayan Fine Pool Salt.
3. Add 10kg per 10,000L of pool water, to raise the TDS by approximately 1,000ppm. Example: For a 50,000L pool add 50kg of Himalayan Fine Pool Salt to raise the TDS by approximately 1,000ppm.
4. For more dosage rates and information scan the QR Code on this bag or visit [www.swimmingpoolsalt.com](http://www.swimmingpoolsalt.com). Always consult your local Pool Pro Professional for advice. These dosage rates are a guide only.



SCAN FOR MORE INFO



**WARNINGS:** This bag is not a toy. Keep away from children. This product is not for human consumption and is only to be used in swimming pools for the purpose of salt water chlorination. The POPS Group Pty Ltd does not guarantee a clear pool in each instance and accepts no liability for any loss or damage arising from the use of Pool Pro Himalayan Fine Pool Salt.

**FIRST AID:** If poisoning occurs contact a Doctor or Poisons Information Centre. Phone Australia 131 126. New Zealand 0800 764 766. SDS available at [www.poolpro.com.au](http://www.poolpro.com.au).

**STORAGE, HANDLING & DISPOSAL:** Store under cover in a dry, clean, cool well-ventilated place away from sunlight. Store and transport in an upright container in a secure upright position. Keep bag tightly closed. Dispose of empty bag in accordance with local regulations.

**CONDITIONS OF SALE:** The use of this material is beyond the control of the distributor, seller and manufacturer; no warranty express or implied is given by them (other than conditions of quality or fitness under State or Territory legislation) in relation to its use; the buyer assumes all risk and responsibility for any consequence whatsoever from the use of this material. Not to be used for any purpose, or in any manner contrary to this label, unless authorised under appropriate legislation. Never add water to chemicals, always add chemicals to water. Not to be used as a food container.

**PACKED BY:** The POPS Group Pty Ltd, 10-12 Cairns Street, Loganholme, QLD 4129, Australia. Australia Ph: 1800 143 788. International Ph: +61 7 3209 7884. [www.poolpro.com.au](http://www.poolpro.com.au) [www.poolpro.co.nz](http://www.poolpro.co.nz)